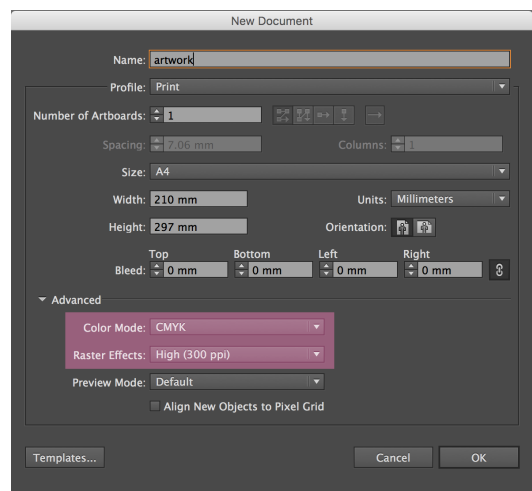
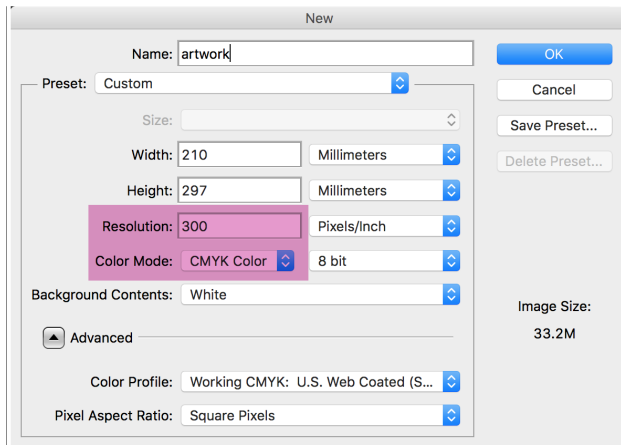




Merch Printing Service: Artwork Guidelines

Please send us artwork files as either high quality PDFs, Adobe Photoshop (.psd), or Illustrator (.ai or .eps). If sending .psd or .ai files please make sure they are saved to be compatible with CS6.

All artwork should be saved at 300dpi in CMYK or grayscale. These settings can be chosen when setting up a new document in either Photoshop or Illustrator:



If you're working with vector artwork please make sure any text is outlined. For Photoshop files, send us a copy of the font (.ttf or .otf) along with your artwork.

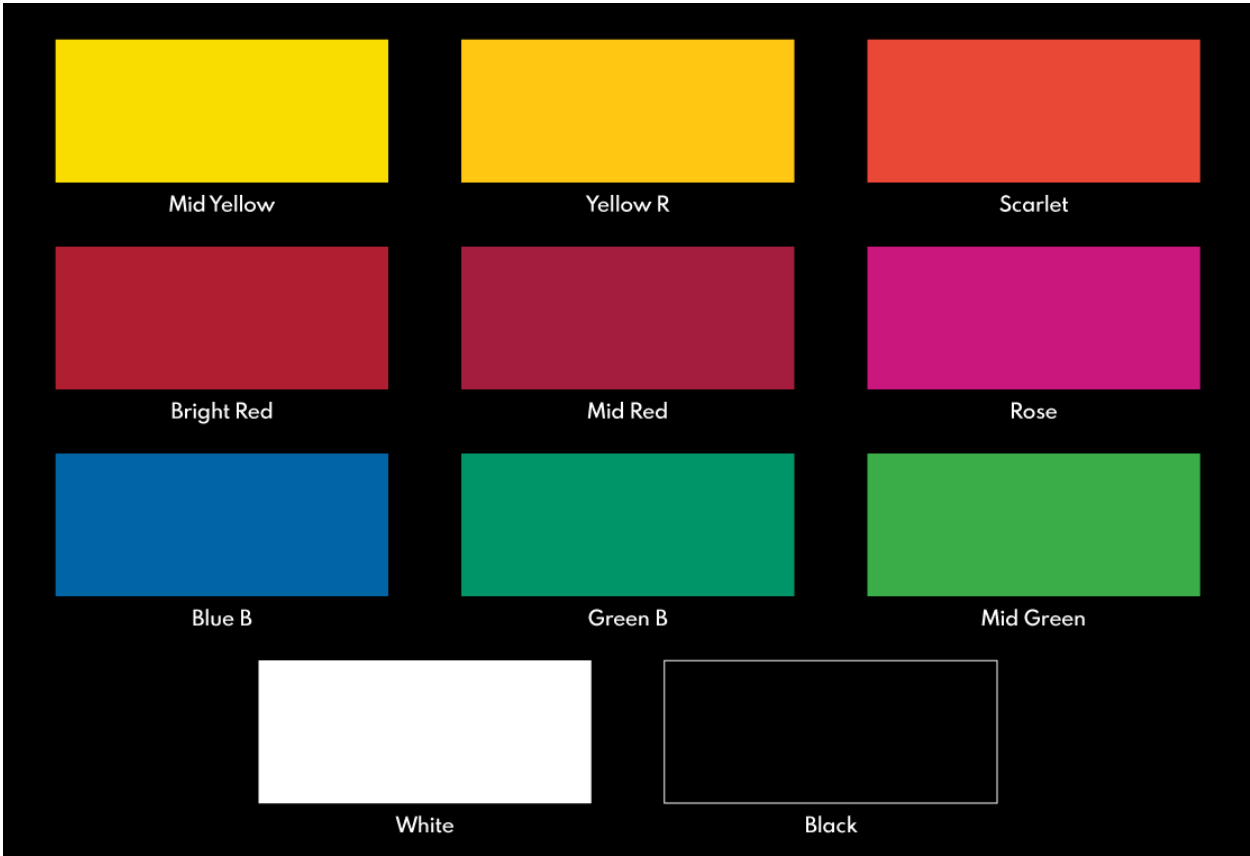
The absolute smallest text size we recommend working with is 8pt, for a standard, sans-serif font. The smallest line size is 0.5pt but we suggest working with at least 1pt for the best results.

It's great if you have an idea of what size you want to print at - please either supply us with measurements or set your artwork files up at 100% so we know what size to print your artwork out. Please also let us know any desired placement of prints.

When working with more than one colour, each colour in your artwork should be saved as a separate layer in Photoshop. The example below shows the Print Clan logo when separated into its two colours or layers of grey and pink:



We use Permeset Aqua Supercover inks to print vibrant, opaque colours on a range of different colour fabrics. We have a stock of premixed colours which can be seen below:



If you're happy to go with one of these colours please let us know which one. If you want us to mix up a specific colour to match your brand, for best results we require the Pantone swatch number (Solid Coated, Graphic Design System). If you're unable to provide this, please send us the CMYK swatch and our printer will match the colour they see on the monitor to the closest Pantone colour. Please be aware that monitor colours can vary a lot so this may not always produce exacting results.

When ready, all artwork should be emailed to hello@printclan.co.uk. Please send large files (over 15 MB) as a WeTransfer or Dropbox link.